

COMMERCIAL SERIES : BCACS

DHW (DOMESTIC HOT WATER) MONO-BLOCK HEAT PUMP

Features



Standard digital display on all units with self-diagnosis

Smart function, coil for thermodynamic solar panel and anti-legionella function as standard

A CLASS CE ERP CERTIFICATE



Main Features

DHW (domestic hot water) mono-block heat pump:

The Coolwell DHW mono-block heat pump with high energy efficiency is a modern and clean solution that guarantees the comfort of your home while always respecting the environment. Installing this heat pump solution for DHW contributes to reduce the harmful emissions to the atmosphere.

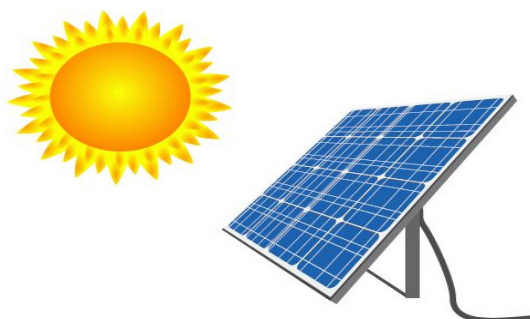
Wi-Fi included

The Coolwell BCACS DHW mono-block heat pump models include a Wi-Fi module to control the machine from anywhere.

Up to 75% real savings

Thanks to the Coolwell DHW mono-block heat pump, you will notice the savings from minute 0. BCACS units are made with an additional heat exchanger compatible for solar energy by default.

*The 100-litre BCACS does not have this exchanger.



DHW (DOMESTIC HOT WATER) MONO-BLOCK HEAT PUMP

.....2

Unit code		BCACS 100L W*	BCACS 200L W	BCACS 300L W	
Power supply		F-V-Hz			
		Monophase 220-240V 50Hz			
Accumulator Characteristics	Capacity in liters	<i>l</i>	100	200	300
	Power	<i>kW</i>	1.03	2.02	2.02
	Input power	<i>W</i>	253	486	486
	Nominal water performance	<i>L/h</i>	32	45	45
	Temperature range	<i>°C</i>	- 5 / 43	- 5 / 43	- 5 / 43
	Max. discharge pressure	<i>Pa</i>	22	22	22
	Min. suction pressure	<i>Pa</i>	6	6	6
	COP		4.16		
	Max. rated current	<i>A</i>	1.7 + 6.8(elect. battery)	3.2 + 6.8(elect. battery)	
	Outlet water temperature	<i>°C</i>	60	60	60
	Max. water temperature	<i>°C</i>	70	70	70
	Temperature range	<i>°C</i>	-5 / 43		
	Gas		R134A	R134A	R134A
	Air flow	<i>m³/h</i>	250	450	450
	Duct diameter	<i>mm</i>	177	177 (flexible duct: 180/200 mm)	
	Max. tank pressure	<i>bar</i>	10		
	Isolate material		Polyurethane		
	Tank isolation thickness	<i>mm</i>	45	45	45
	Inner tank thickness	<i>mm</i>	1	1.5	1.5
	Outer tank thickness	<i>mm</i>	0.5		
	Tank cap thickness	<i>mm</i>	0.05		
	Material		Inside: stainless steel SUS 304 Outside: galvanised steel		
	Hot water outlet	<i>"(inches)</i>	3 / 4 "		
	Inlet / outlet solar heating source	<i>"(inches)</i>	3 / 4 "		
	Cold water inlet	<i>"(inches)</i>	3 / 4 "		
	Drain size	<i>"(inches)</i>	3 / 4 "		
	Condansate water outlet	<i>"(inches)</i>	1 / 2 "		
	Coil length	<i>m</i>	2.8	5.5	5.5
	IP protection		IPX1		
	Max. sound level	<i>dB(A)</i>	44	46	46
Dimensions (Ø-A)	<i>mm</i>	510 x 1167	560 x 1750	640 x 1840	
Dimensions with packaging (Ø-A)	<i>mm</i>	565 x 565 x 1275	615 x 615 x 1870	695 x 695 x 1975	
Weight	<i>kg</i>	56	90	97	
Weight with packaging	<i>kg</i>	60	94	101	